



A step towards sustainable progress

## MIZORAM

# Towards A Better Tomorrow



**DISTRICT**  
LUNGLEI



**7,556+**  
LIVES IMPACTED



SCAN TO FOLLOW US ON  
OUR DIGITAL CHANNELS

\*Lives Impacted as of March 2025



# ABOUT PARIVARTAN

HDFC Bank's Parivartan aims at mainstreaming economically & socially challenged groups across the country by ushering growth, development and empowerment. Committed to developing sustainable ecosystems through various partnerships, we identify and support programmes that seek to develop and advance communities. HDFC Bank Parivartan has positively impacted **105.6+ million** lives pan-india.

## PILLARS OF PARIVARTAN



 **60+**  
FARMERS  
SUPPORTED

### RURAL DEVELOPMENT

Through its Holistic Rural Development Programme (HRDP), HDFC Bank Parivartan is driving rural transformation by promoting alternative agriculture, aquaculture, forming institutions and committees, strengthening livelihoods and building resilient, sustainable communities.



 **~1,250+**  
STUDENTS  
IMPACTED  
THROUGH SMART  
SCHOOLS

### PROMOTION OF EDUCATION

With initiatives that aim at ensuring long-term financial stability across vulnerable communities, Parivartan aims at making world-class education accessible to our future generations.



 **980+**  
INDIVIDUALS  
TRAINED

### SKILL TRAINING & LIVELIHOOD ENHANCEMENT

Through training, networking and financial support, Parivartan works towards upskilling and fostering an entrepreneurial spirit in marginalised communities.



### HEALTHCARE & HYGIENE

Parivartan has successfully helped in promoting safe hygiene practices and improved sanitation facilities across the state.



 **51,767+\***  
SPREAD OF  
FINANCIAL FRAUD  
AWARENESS (VIGIL  
AUNTY)

### FINANCIAL LITERACY & INCLUSION

Parivartan has enabled communities to break the cycle of poverty and enter the banking fold.



 **231+**  
SOLAR LIGHTS  
INSTALLED

### NATURAL RESOURCE MANAGEMENT

Parivartan revitalises rural ecosystems by restoring water bodies, rejuvenating soil health, and implementing sustainable natural resource management practices to ensure long-term agricultural prosperity and community resilience.

\*Based on the views across digital platforms



## KEY INTERVENTIONS



P1031

### GROWING SKILLS, SPARKING MINDS | DISTRICT - LUNGLEI

HDFC Bank Parivartan, in collaboration with the Society for Action in Community Health (SACH), is empowering 10 villages through sustainable development initiatives. Impacting over 7,396 individuals, the project enhances livelihoods, education, healthcare, and infrastructure. Key initiatives include training 1,030 farmers in organic and water-efficient agriculture, providing skill development for 130 youth and women, and establishing eight community enterprises. It also focuses on forming Self Help Groups (SHGs) and youth groups, upgrading 10 schools and *anganwadis*, and installing solar-powered streetlights and water treatment systems. By bringing 130 acres under irrigation and promoting organic farming on 150 acres, the initiative fosters long-term agricultural resilience. Improved sanitation facilities further ensure better health and well-being for the communities.



P0685

### BUILDING SUSTAINABLE CAREERS | DISTRICT - LUNGLEI

HDFC Bank, in partnership with Orion Educational Society, is implementing a transformative Rural Self Employment Training Institute (RSETI) to equip 1,770 youth, with sustainable livelihoods. This initiative includes skill development, employment opportunities, and entrepreneurial support. Beyond vocational training, candidates receive personalised career counselling, psychometric testing, soft skills development, and industry exposure to enhance their career prospects. This is the Bank's first and only RSETI across the country.

## STORIES OF PARIVARTAN

### FROM RURAL ROOTS TO RISING CAREERS: HOW SKILL TRAINING TRANSFORMED TWO YOUNG WOMEN'S FUTURES

| BENEFICIARIES - LALMUANPUII PACHUAU AND C. LALHLIMPUII

| LOCATION - LUNGLEI

#### THE CHALLENGE

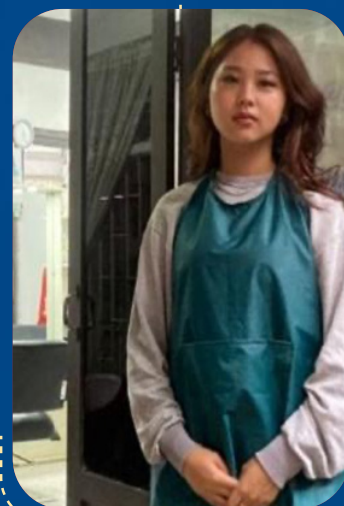
In rural communities, limited access to vocational training has long held back young people—especially women—from building stable careers. Without practical skills or livelihood options, many remained financially dependent and unable to pursue their aspirations.

#### OUR INTERVENTION

Through HDFC Bank Parivartan's RSETI initiative, youth like Lalmuanpuii and Lalhlimpuii were given a chance to reimagine their futures. Lalmuanpuii enrolled in a beautician course, gaining hands-on training in salon services, customer care, and business operations. Lalhlimpuii chose tailoring, learning both the craft and the entrepreneurial skills needed to thrive in a competitive market.

#### THE RESULT

Today, both women are thriving in their fields. Lalmuanpuii works at Muanteii Beauty Parlour in Lunglei, earning Rs.15,000 per month and contributing to the salon's growth. Lalhlimpuii, employed at Muani Tailoring Shop, is driving business with her flair for modern fashion, earning Rs.20,000 per month. With confidence, steady income, and a growing client base, they're redefining what's possible for rural women in the workforce.



LALMUANPUII PACHUAU



C. LALHLIMPUII